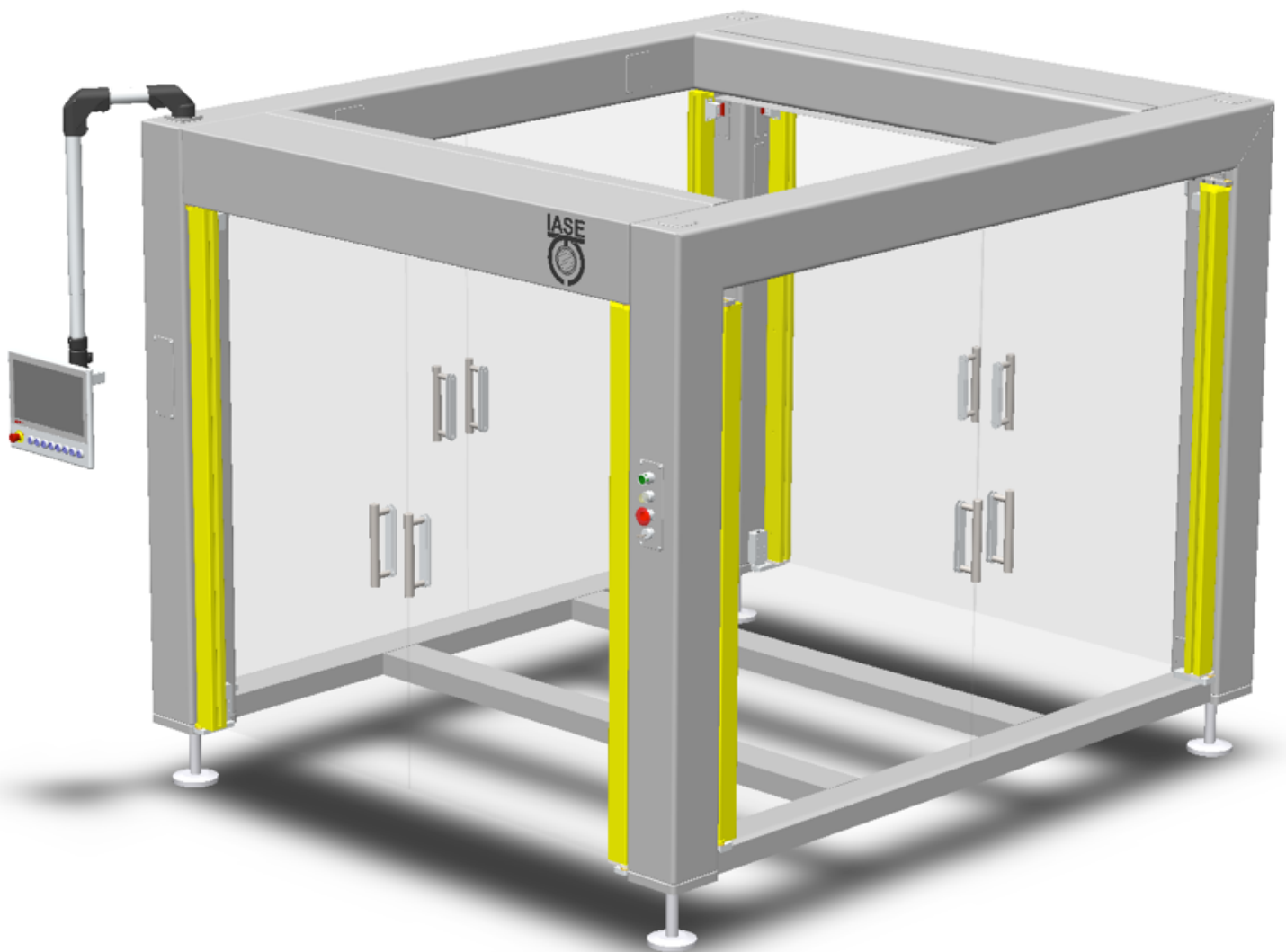




MODULAR FRAME

The building block of innovative packaging machines

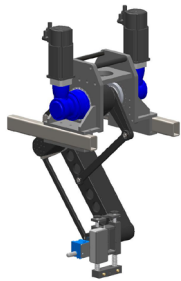


MODULAR FRAME

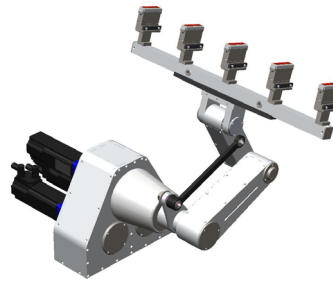
The modular frame presents a clean and innovative shift from the traditional base plate design that IASE has employed successfully in packaging machines for three decades.

The frame is constructed from welded tubular steel or stainless steel and powder coated or epoxy painted depending on the customer's needs and preference. Control stations are embedded in the frame for ease of access and operation. Additional controls, operational settings, and troubleshooting tools are available using the adjustable STRONGARM mounted Human Machine Interface with a full multi touch screen SCADA package tailored to the customer's needs. For a cleaner appearance and to maximize machine access electrical control panels have been located in the upper frame. A modular frame packaging system is built with suspended mechatronic modules from our library.

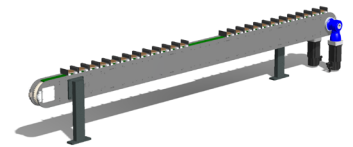
Designed to work with:



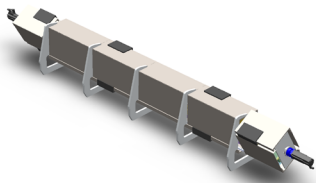
SR-56
2-Axis



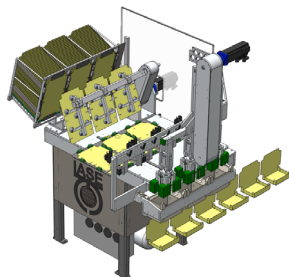
R-150
4-Axis Robot



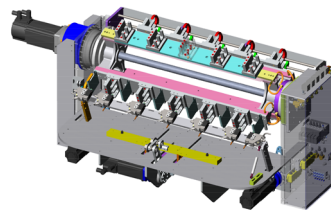
VC-300 / VC-500
Dual Chain Collator



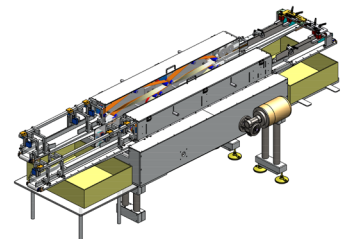
WIPTM
Robotic Transport



CTF- Century Series
Carton Former



CTF- Millenium Series
Carton Former



Single / Dual
Infeed